

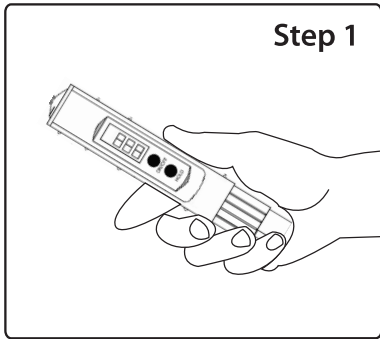
Nauti-Clear™ Operating Instructions

This is a Nauti-Clear™ Professional Spot-Free Rinse System, which uses a patented water filtration process by which minerals, chlorine, phosphates, and other spot-causing particulates are removed from water sources without the use of salt, thus providing a true spot-free rinse when used as directed.

How Nauti-Clear™ Works for You

- *The Nauti-Clear™ Spot Free System provides water designed to leave you with a spot free finish - without any hand drying.*
- *This water works like a “hydro-vacuum,” to pick up dirt particles and allow them to be washed away.*
- *The non-thermal distillation process is specifically designed to take minerals, chlorine and phosphates out of the water for evaporation without spots.*

Instructions for Proper Hook-Up:



Step 1 - Test your water from your hose bib using the TDS EZ Meter that was provided with your Nauti-Clear™ unit.

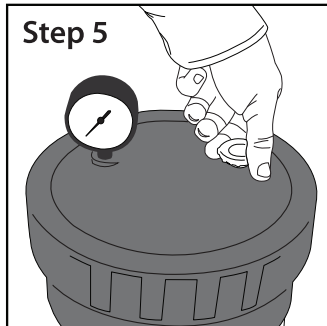
- Unpack the TDS EZ meter.
- Turn the meter on (press the top blue button on the front).
- Take the cap off the bottom and fill it with water from your hose bib.
- Place the meter into the cap (note: water will come out of the cap as the meter displaces the liquid)
- Allow 10 seconds for the reading to stabilize.
- Read the digital display on the front of the meter. This is your TDS reading. (TDS is the Total Dissolved Solids in your water measured in PPM). Write original source water PPM in the space provided. **Check your filtered water PPM periodically. If it is registering over 40 PPM, slight spotting may begin to occur. At that time, please read instructions on reverse side for filter exchange.**

PPM
ORIGINAL SOURCE WATER
PPM READING

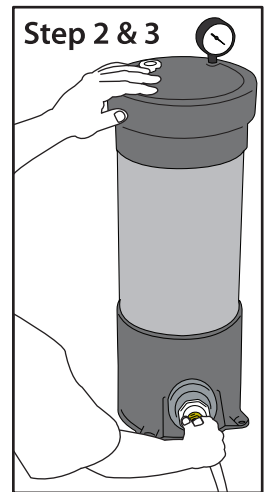
Step 2 - Connect water source hose (not included) to the hose coupling at the bottom of the tank, on the side labeled IN. [see diagram]

Step 3 - Connect one end of the 6-foot connector hose to hose coupling at the bottom of the tank on the opposite side labeled OUT. [see diagram]

Step 4 - Attach a water nozzle of choice if desired (not included).



Step 5 - Turn on Source Water and Open Tank Bleeder Valve. Locate Bleeder Valve located on the top of Tank. [see diagram] Open the Bleeder Valve by turning the white knob counter-clockwise. As the tank fills with water, air should be released through the loosened Bleeder Valve. Once the air is eliminated, a small amount of water will escape from the Bleeder Valve. Tighten the valve on the tank by turning it clockwise until tight. Watch pressure gauge on the top of the tank **IMPORTANT! The reading on the Pressure Gauge should not exceed 80 psi. If the pressure reading is above 80 psi, it is highly recommended that a pressure reducing valve be installed on the main supply coming from the water source.**



Instructions for Nauti-Clear™ Washdown Rinse

Step 1 - Hook up the Nauti-Clear™ spot-free rinse unit to your water source and check water PPM. (see instructions for proper hook-up above). Rinse all washing implements with the Nauti-Clear™ filtered water before use. Keep parts clean while washing.

Step 2 - Squirt approximately 1 ounce of soap into a bucket (Nauti-Clear™ requires less soap than standard washing methods).

Step 3 - Fill the bucket nearly full of processed water from the Nauti-Clear™ unit.

Step 4 - Rinse off entire surface to be washed with the Nauti-Clear™ processed water.

Step 5 - Wash surface with soapy water. For best results, wash the surface in sections.

Step 6 - Rinse washed surface off with the Nauti-Clear™ processed water. The most effective rinse is one that is not a hard spray, but rather a flooding final rinse. **NO DRYING REQUIRED.**

NOTICE: WATER TREATED WITH Nauti-Clear™ SPOT-FREE UNITS IS NOT INTENDED FOR DRINKING PURPOSES

Nauti-Clear™ Cartridge Exchange Instructions

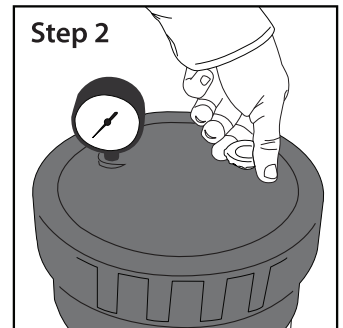
Periodically use your TDS meter to check the PPM of your water [see instructions on reverse side]. If your Nauti-Clear™ processed water is registering over 40 ppm, slight spotting may begin to occur. At this time, please contact PDW Technologies at 1-877-323-0386 to order a Cartridge Exchange Kit.

Step 1 – Turn off all Source Water Supplies

Turn off any and all source water supplies leading to the Nauti-Clear™ unit. **IMPORTANT!** During and after use, the tank contents are under pressure. Any attempt to open tank lids before Step 1 and Step 2 are complete could cause serious harm to the unit, and/or bodily injury.

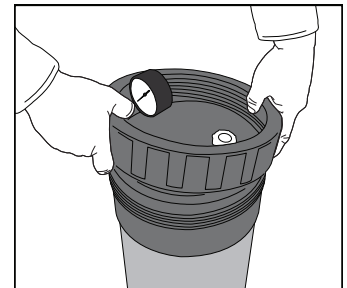
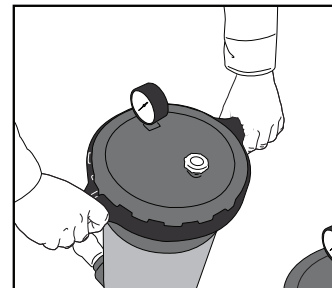
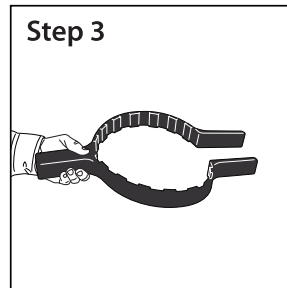
Step 2 – Relieve the Water Pressure in the Tank

The Tank must be relieved of pressure before cartridge exchange can be completed. Locate the Bleeder Valve located on the top of each Tank. [see diagram] Release the pressure by turning the white knob counter-clockwise. Sound of pressure release should be heard as this is done, and the pressure valve on the Tank should also fall. **NOTE: A small amount of water may escape through the Bleeder Valve when pressure is released. Small amounts of water are normal. However, if a large amount of water comes out, make sure your source water is completely turned off. Relieve the pressure on the Tank before continuing to Step 3.**



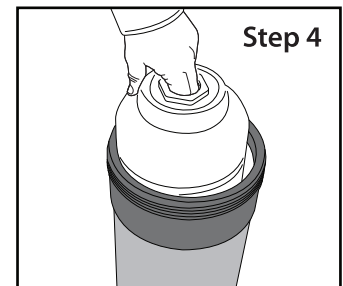
Step 3 - Remove Tank Lid(s)

WARNING! Make sure that ALL pressure is properly released from the Tank before performing this step. Now that the pressure from the Tank has been released, use the provided Tank Wrench to remove the top of the Tank. Fit the wrench around the top of the unit, while holding the wrench together using the handle, turn the tank top counter-clockwise until it is completely removed from the tank. [see diagrams above]



Step 4 – Remove Spent Cartridges from Tank

Depending on which Nauti-Clear™ unit you own, there is (1) cartridge contained in the Tank, or (2) cartridges stacked on top each other. Remove all cartridges from the Tank. [see diagram] **NOTE:** The spent cartridges may leak some water when removed. Place spent cartridges where they will not cause damage from leakage.



Step 5 – Insert Replacement Cartridges into Tank(s)

Insert the purchased Replacement Cartridge(s) into the empty Tank in the order as indicated on the cartridges. **NOTE:** The top replacement cartridge should fit on top of the bottom cartridge with the nib of the bottom cartridge nesting into the receptacle of the top cartridge. The top cartridge should **SNAP INTO PLACE ON TOP OF THE BOTTOM CARTRIDGE.** The cartridges should feel snug when installed properly.

Step 6 – Restore Tank Lid(s)

Using the provided Tank Wrench, screw the Tank Lid back onto the tank by turning it clockwise. Tighten down until snug. **WARNING! Do not over tighten the lid onto the Tank or damage could occur.**

Your Cartridge Exchange is now complete.

NOTICE: WATER TREATED WITH Nauti-Clear™ SPOT-FREE UNITS IS NOT INTENDED FOR DRINKING PURPOSES